



ECORP Consulting, Inc.
ENVIRONMENTAL CONSULTANTS



NEVADA IRRIGATION DISTRICT E. George to Lake Wildwood Backbone Extension Pipeline Project Initial Study and Mitigated Negative Declaration

Presented by:

Gary D. King, PhD, PE (NID)
Tonia M. Tabucchi Herrera, PE (NID)
Chris Stabenfeldt (ECORP)

For the Board of Directors Meeting
August 14, 2019



Overview of Presentation



- ◆ Review the proposed project and initial study
- ◆ Review the mitigation measures
- ◆ Open and hear public testimony
- ◆ Close public hearing
- ◆ Recommend to adopt resolution



Purpose of the Project



- ◆ Provide an interconnection to the Lake Wildwood Treated Water System from the E. George Treated Water System
 - Creates operational flexibility in emergency and peak usage times
 - Allows for scheduling of maintenance requiring longer periods of outages for the Lake Wildwood Treatment Plant
- ◆ Provide the availability of treated water for parcels adjoining the pipeline





Project Overview: Proposed Project



- The Project would install approximately 5.6 miles of new 16 or 20-inch underground pipe (within the roadway) depending on location for most of the alignment.
- Within Lake Wildwood Drive, it is anticipated that the new pipeline would parallel existing lines. The pipeline would normally operate at approximately 30-150 pounds per square inch (PSI) (standard pressure design for NID).
- Pipeline appurtenances would include fire hydrants (every 1,000 feet minimum), service lines and meter boxes, paddle markers, and stub outs for future water line extensions.
- Except for fire hydrants and Pressure Reducing Valve (PRV) stations, these facilities would be placed underground along the pipeline alignment in roadway or road shoulder at the adjacent property lines.
- Above Ground Improvements (AGI) associated with five proposed Pressure Reducing Valve (PRV) stations may be entirely above ground or in underground vaults (or some combination) and would require an easement or purchase outside existing County ROW.



Project Overview: Project Location

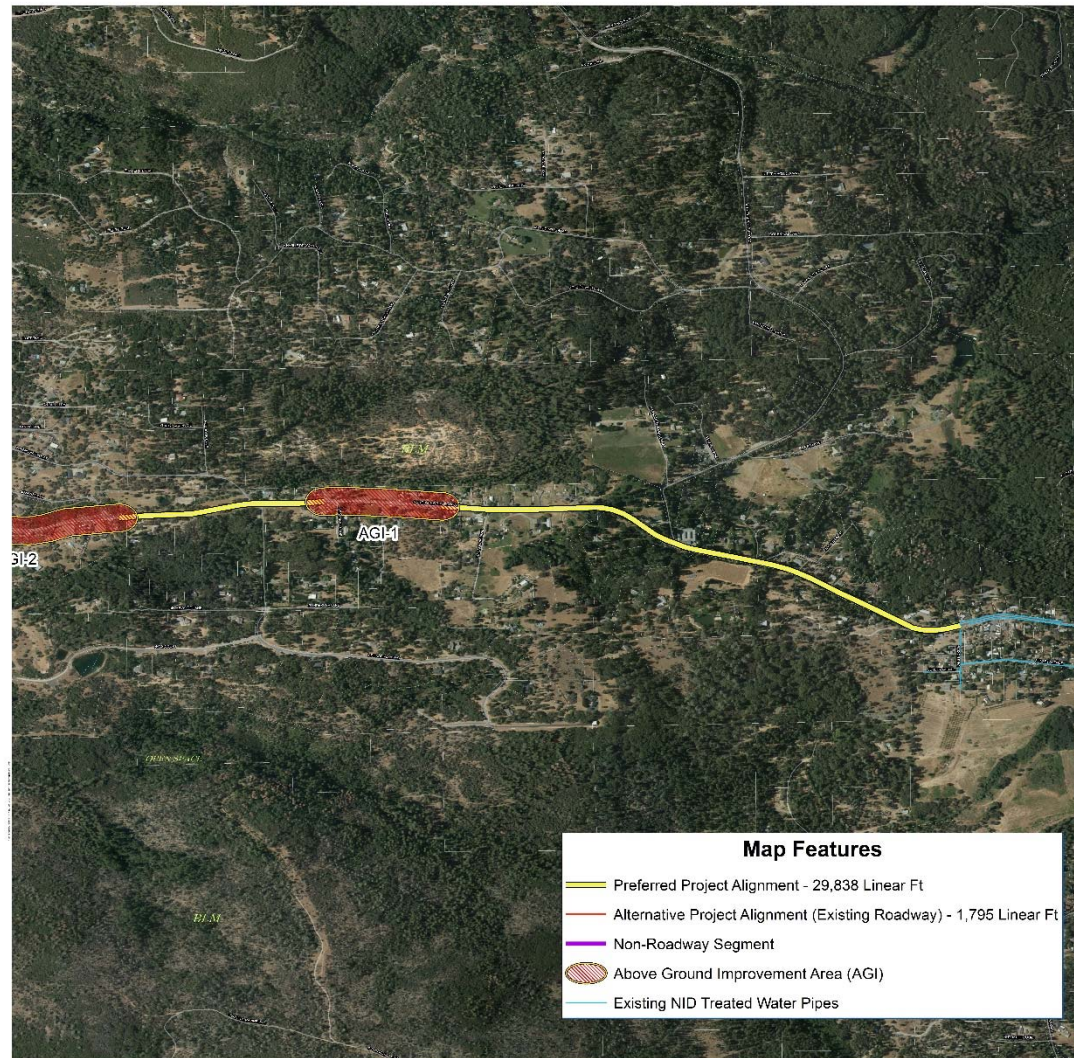


The Project is generally located along 5.6 miles of Rough and Ready Highway in Nevada County, within the existing County right-of-way/public roads of the following roadways:

- ◆ Rough and Ready Highway
 - ◆ Lake Wildwood Drive
 - ◆ Rough and Ready Road
 - ◆ Minnow Lane
- Riffle Box Road, Empty Diggins Lane and Bosa Drive are not County roads and will require easement acquisition.
 - There are two non-roadway segments: one at the west end of Riffle Box Road and one just east of Minnow Lane (along a future fire access road) that will require an easement.
 - The proposed project includes an Alternative Alignment on the western end. The Alternative Alignment is an approximately 1,500 foot-long “non-roadway” segment located southwest of the proposed project Empty Diggins Lane segment immediately east of the Lake Wildwood subdivision. **The alternative alignment is the preferred route.**

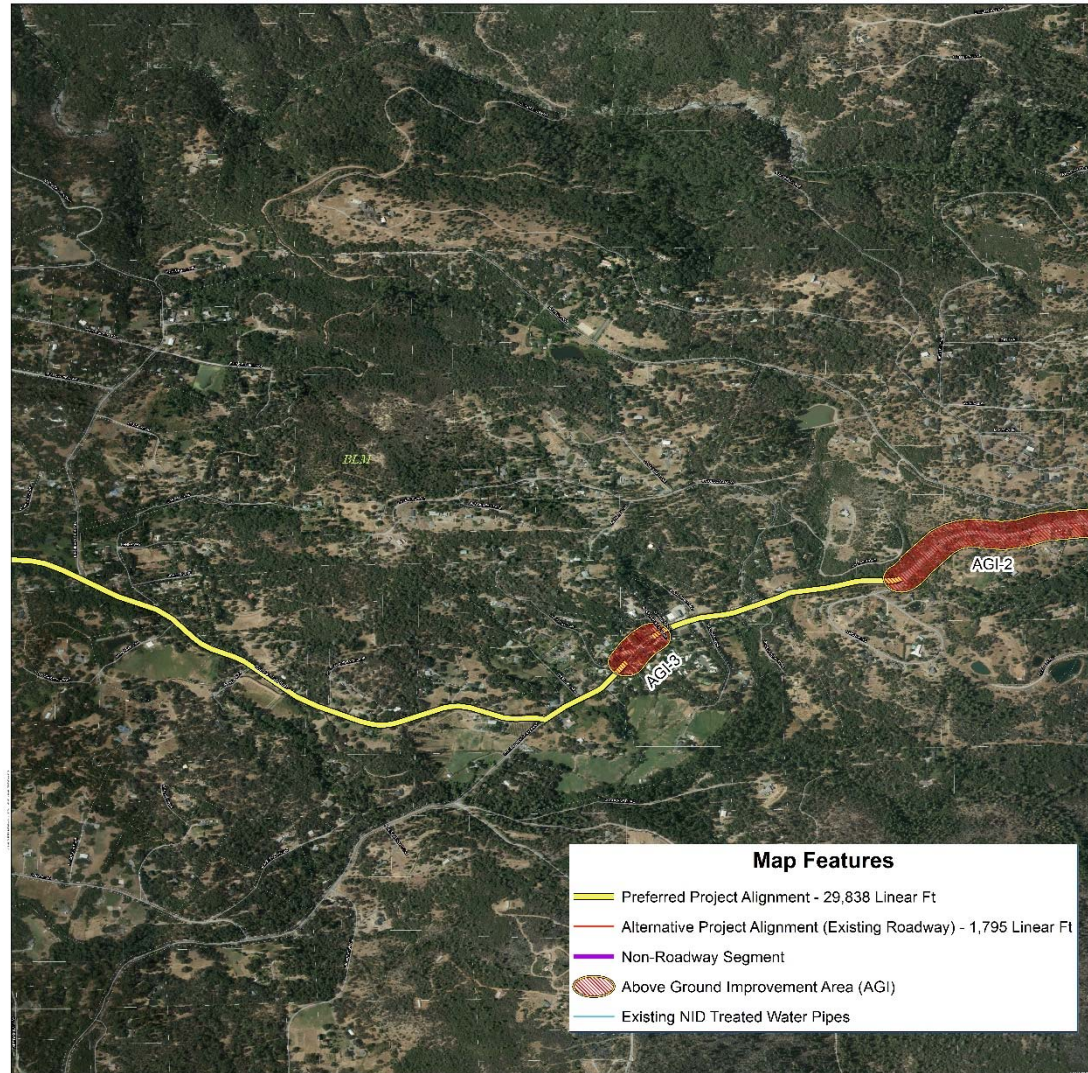


Map of Route



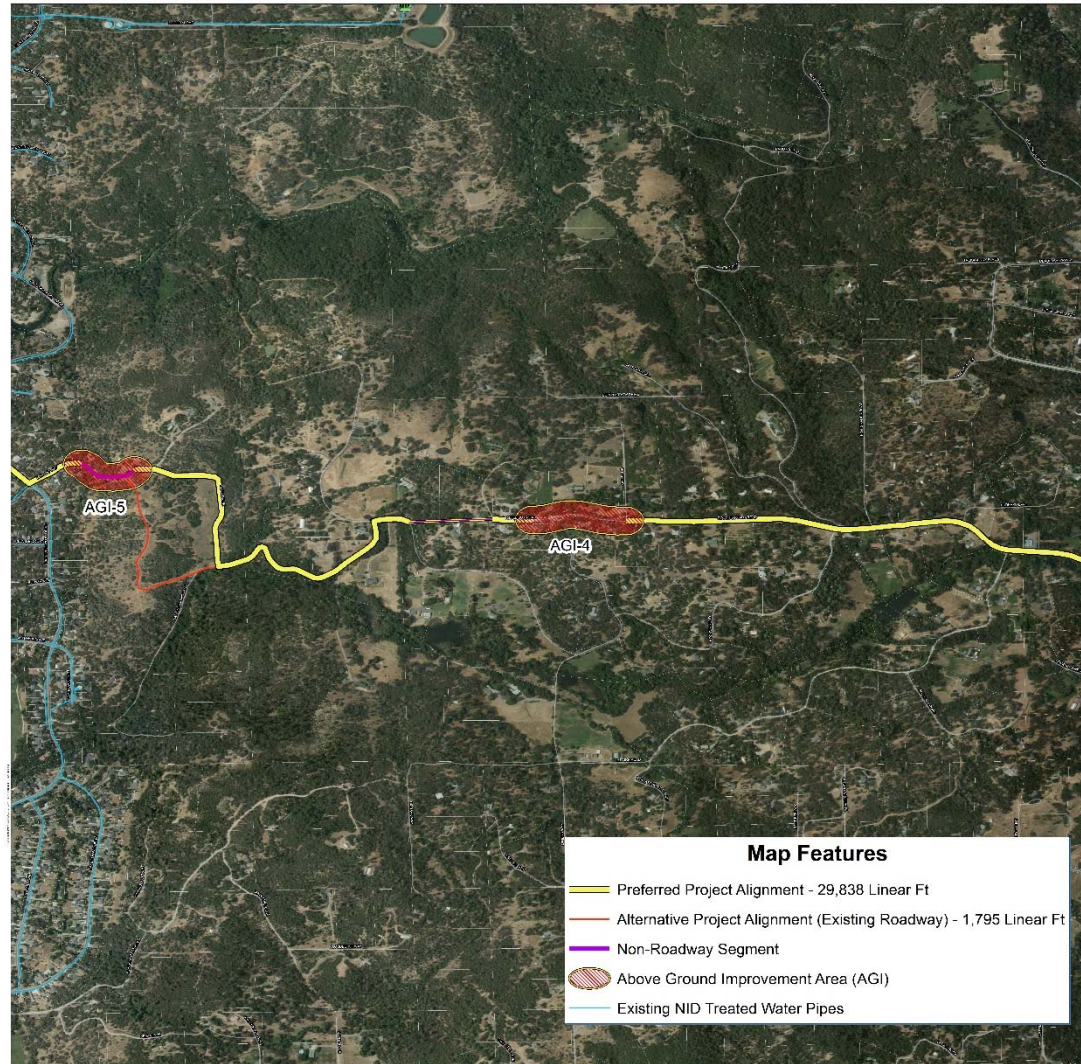


Map of Route





Map of Route





Photos of Route



Photo 1: Intersection of Rough and Ready Highway and Bitney Springs Road facing West



Photo 2: Approx. 10144 Bonanza Way, facing West down Rough and Ready Highway



Photos of Route



Photo 3: Approx. 13128 Rough and Ready Highway, facing West



Photo 4: Riffle Box Road Facing West towards Rough and Ready Road



CEQA Process



- AB52 Notice of Opportunity to Consult was sent via certified mail March 6, 2019 to 3 tribes. UAIC responded requesting opportunity to consult April 3, 2019. Consultation concluded May 3, 2019.
- An Initial Study/Mitigated Negative Declaration (IS/MND) was prepared for this project.
- The 30 day public review and comment period was June 7, 2019 through July 7, 2019.
 - Mailers were sent to the properties in the project area and trustee agencies
 - NOI was posted at the State Clearinghouse and County of Nevada Clerk Office
 - NOI was noticed in The Union on June 7, 2019
 - Hard copy of IS/MND was made available for review at NID Business Center and Madelyn Helling Library
 - Electronic copy of IS/MND available on the District website
- A community meeting was hosted at the District Board room on June 27, 2019.
- The IS/MND will be considered for adoption and project approval by the Board August 14, 2019.



Project Overview: Mitigation Measures



Mitigation Measure AQ-1: Ozone Precursor-Reduction Measures

This mitigation measure requires several measures to be implemented by the contractor to reduce ozone precursors. Those measures include:

- All off road equipment (portable and mobile) shall meet or exceed Tier 2 engine emission specifications as well as applicable state and federal requirements.
- Emissions from construction equipment used onsite shall comply with NSAQMD Regulation II, Rule 202 for visible emissions.
- Idling times for equipment shall be minimized by either reducing times to less than 5 min (as required by State airborne toxics control measures) or turning equipment off when not in active use. Clear signage shall be provided for construction workers at all access points.
- All construction equipment shall be maintained and properly tuned in accordance with manufacturers' specifications.
- Where feasible, existing power sources (e.g., power poles) or clean fuel generators shall be utilized rather than temporary power generators (i.e. diesel generators).



Project Overview: Mitigation Measures



Mitigation Measure BIO-1: Conduct Pre-Construction Nesting Bird Surveys

Pre-construction nesting bird surveys will be required prior to each construction season for the section of the project being implemented that year. This mitigation measure requires that pre-construction nesting bird surveys will be conducted for all suitable habitat on the project site within 14 days prior to construction activities that take place during the nesting season (February 1- August 31). Surveys should be conducted within 300 feet of the Project alignment for nesting raptors, and 100 feet of the Project for nesting songbirds.

If active nests are found, a no-disturbance buffer around the nest shall be put up and will remain in place until the fledglings are capable of flight and can be independent of the nest tree. Buffer distance and removal of the buffer shall be established by a biologist in consultation with CDFW or the CEQA lead agency. Once the young are independent of the nest, no further measures are necessary. Pre-construction nesting surveys are not required for construction activity outside the nesting season.



Project Overview: Mitigation Measures



Mitigation Measure BIO-2: Conduct Pre-Construction Special Status Plant Surveys

This mitigation measure only applies to construction activities within the future fire lane segment as well as the non-roadway segment and the PRV station improvement locations. Pre-construction surveys are required and will be performed according to USFWS, CNPS, and CNPS protocol. Once conducted, surveys are valid three years for annual plant (dominated) communities and five years for tree and shrub (dominated) communities. Therefore, multiple segments can be surveyed for one year to cover multiple years of construction. If no special-status plants are found, no further measures pertaining to special-status plants are necessary. If special-status plant species are found, avoidance zones may be established around plants to clearly demarcate areas for avoidance. If special-status plant species are found and avoidance of the species is not possible, then additional measures such as seed collection and/or translocation may be developed in consultation with the appropriate agencies.



Project Overview: Mitigation Measures



Mitigation Measure BIO-3: Conduct Special Status Amphibian Surveys

This mitigation measure only applies to a few of the PRV station improvement locations as well as 3 creeks that are located within the project area. This mitigation measure will minimize potential impacts to foothill yellow-legged and California red-legged frogs by requiring that a pre-construction survey of aquatic resources be conducted within 72 hours of the start of construction activities adjacent to those resources. If no special-status amphibians are detected during the surveys, no further measures are needed. However, if they are found to be present, additional measures will be developed (in coordination with CDFW) to avoid impacts.

Mitigation Measure BIO-4: Worker Environmental Awareness Training (WEAP)

This mitigation measure requires all construction workers to be provided with training to familiarize them with the species they could encounter onsite and the environmental compliance measures related to their protection. This mitigation will be implemented prior to each construction season.



Project Overview: Mitigation Measures



Mitigation Measure BIO-5: Conduct Special Status Reptile Surveys

This mitigation measure only applies to certain above ground improvement areas and creeks along the project corridor. Measures to minimize potential impacts to northern western pond turtle include a pre-construction survey of aquatic resources within 72 hours prior to the start of construction activities adjacent to those resources. Surveys are only needed for aquatic resources that contain water when construction commences. If no special-status reptiles are detected during the surveys, no further measures are needed. If special-status amphibians are detected, additional measures may be required

Mitigation Measure BIO-6: Conduct Special Status Bat Surveys

This mitigation measure only applies to the non-roadway section when trees will be removed, or limbs will be trimmed or directly/physically disturbed by construction equipment. Measures to reduce impacts to potential bat habitat include limiting tree removal activities to outside of the maternity season for bats (March 1 to September 30), to the extent feasible. Trees proposed for trimming or removal should be inspected for recent bats use by a qualified biologist no more than 7 days prior to disturbance. Tree trimming/removal should occur in the late afternoon or evening when it is closer to the time that bats would normally emerge, and each tree will be gently shaken before to allow bats time to leave the tree. If a maternity roost is located, the roost will remain undisturbed until September 15 (or sooner if the biologists has determined the roost to be no longer active).



Project Overview: Mitigation Measures



Mitigation Measure BIO-7: Permits (not anticipated)

If for any reason it is determined that any Project work will impact one or more aquatic features, the appropriate measures (as listed in the MMRP) are recommended to minimize potential impacts.

Mitigation Measure BIO-8: Oak Tree Impacts

This mitigation measure applies to the non-roadway segment of the project. To minimize potential impacts to oak trees several measures have been identified. These measures include compliance with the Nevada County Tree Ordinance, avoidance of trenching and/or grading within the drip-line of trees (where practical), protection of exposed roots with protective material during construction, replacement of native trees with like kind, and compliance with County standards for tree protection.

Mitigation Measure CUL-1: Worker Awareness Training

This mitigation measure requires tribal and cultural awareness training for all personnel involved in ground disturbing activities. This mitigation will be implemented prior to each construction season.



Project Overview: Mitigation Measures



Mitigation Measure CUL-2: Avoid and minimize impacts to previously unknown Tribal Cultural Resources

This mitigation measure ensures proper steps are taken if unknown cultural or tribal resources are encountered during construction. Actions include suspension of work within 100 feet of the find and immediate notification of NID staff. If the find includes human remains, then the NID shall immediately notify the Nevada County Coroner and procedures listed in the California Health and Safety Code as well as the Public Resource Code shall be followed.

Mitigation Measure GEO-1: Sedimentation and Erosion Control Measures

This mitigation measure requires compliance with requirements of the State General Construction Activity Storm Water Permit and the preparation of a Stormwater Pollution Prevention Plan.

Mitigation Measure PALEO-1: Discovery of Unknown Resources

This mitigation measure ensures that if any paleontological resources (i.e., fossils) are found during proposed Project construction, construction activities shall be halted immediately in the subject area and the found resource will be fenced off using orange or yellow fencing until NID is notified and a qualified paleontologist is retained to evaluate the find and recommend appropriate treatment of the inadvertently discovered paleontological resources. Once the area is cleared by the qualified biologists, work can resume.



Project Overview: Mitigation Measures



Mitigation Measure HAZ-1: Dust Control

This mitigation measure will minimize potential Naturally Occurring Asbestos (NOA) from becoming air born during construction activities. If ultramafic rock is exposed to the air during construction, then the following procedures must be put into effect. Water support, in the form of a water truck or mobile storage tank, will be used in regular intervals to keep the open earth area wet and dust free. Proper signage noting the possibility of NOA and required protective gear will available in the area. PPE including coveralls and respirators will be worn by all workers in the area. These procedures will be followed as long as ultramafic rock is exposed and can be unfollowed when the rock is again covered with fill.



Project Timeline



- Design – Fall 2019-2020
- Geotechnical Investigation – Summer 2019
- Easement Acquisition – 2019-2020
- Construction 2019-2026
 - Release of Phase 1 for bidding is anticipated for late Fall 2019
 - Due to the budget available the project will be phased 5-7 years.



Open Public Comment



Close Public Comment



Conclusion of Presentation



NID Staff Requests the Board of Directors to:

Adopt the Mitigated Negative Declaration and approve the project Mitigation Monitoring and Reporting Program for Resolution #2019-XX for the E. George to Lake Wildwood Backbone Extension Pipeline Project