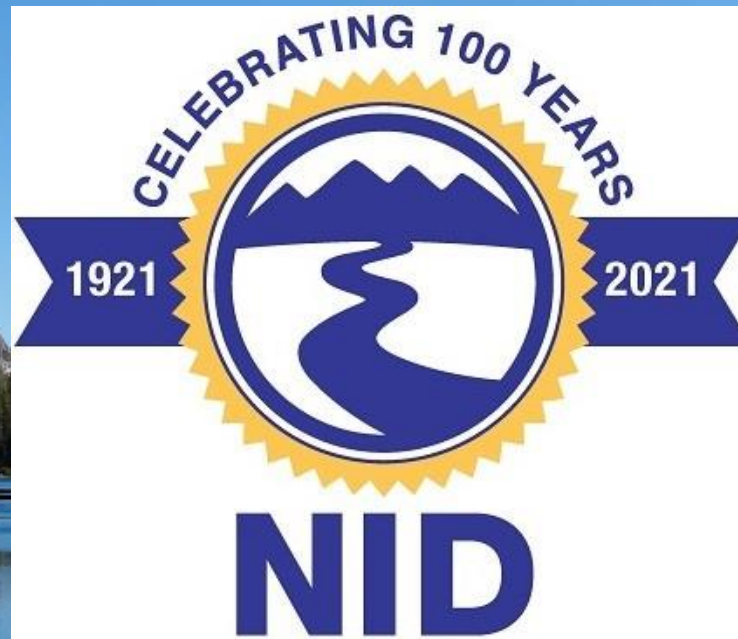


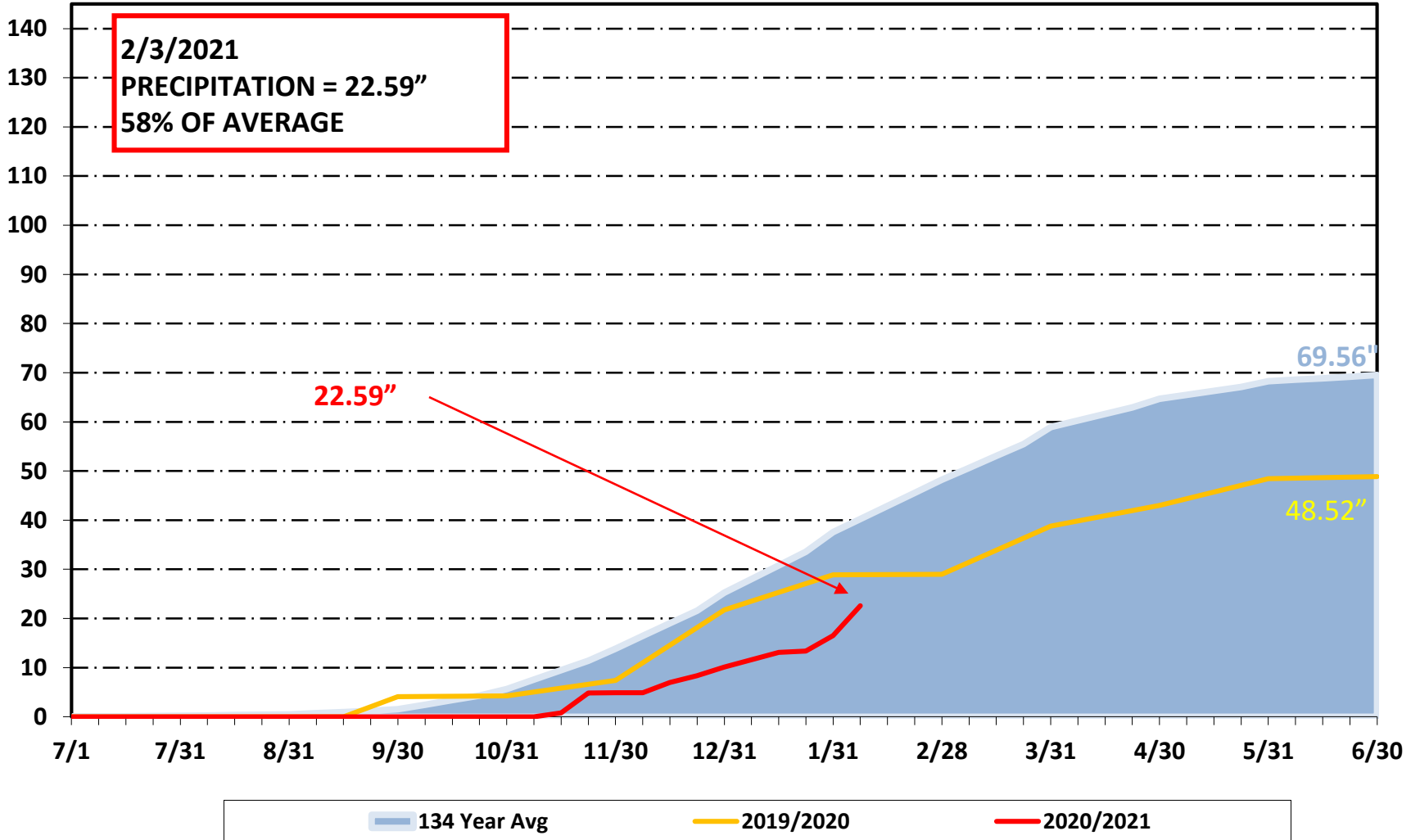
WHO Committee Water Supply Update February 9, 2021



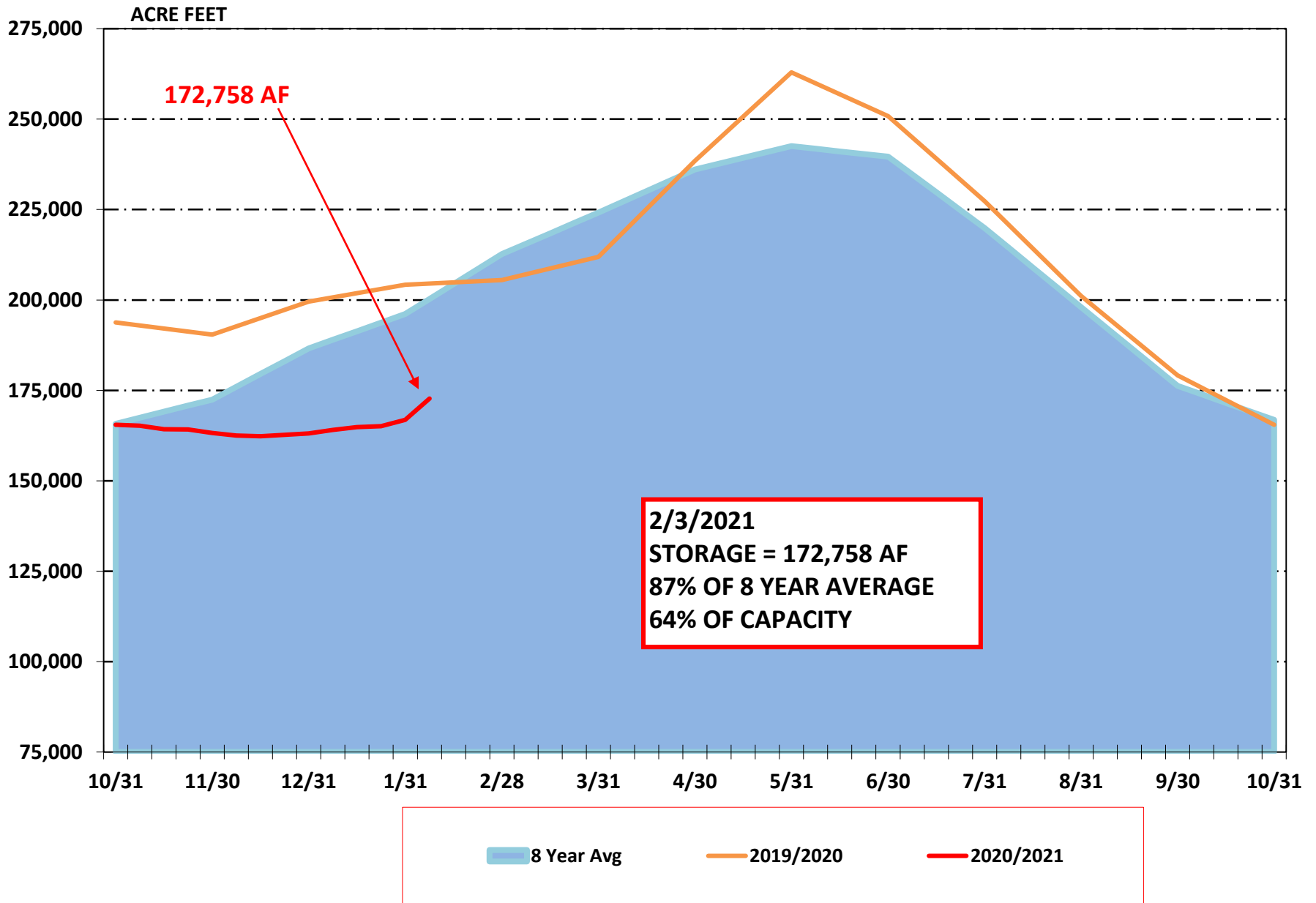
Proudly serving portions of Nevada, Placer, and Yuba Counties

BOWMAN LAKE PRECIPITATION

INCHES



NID RESERVOIR STORAGE

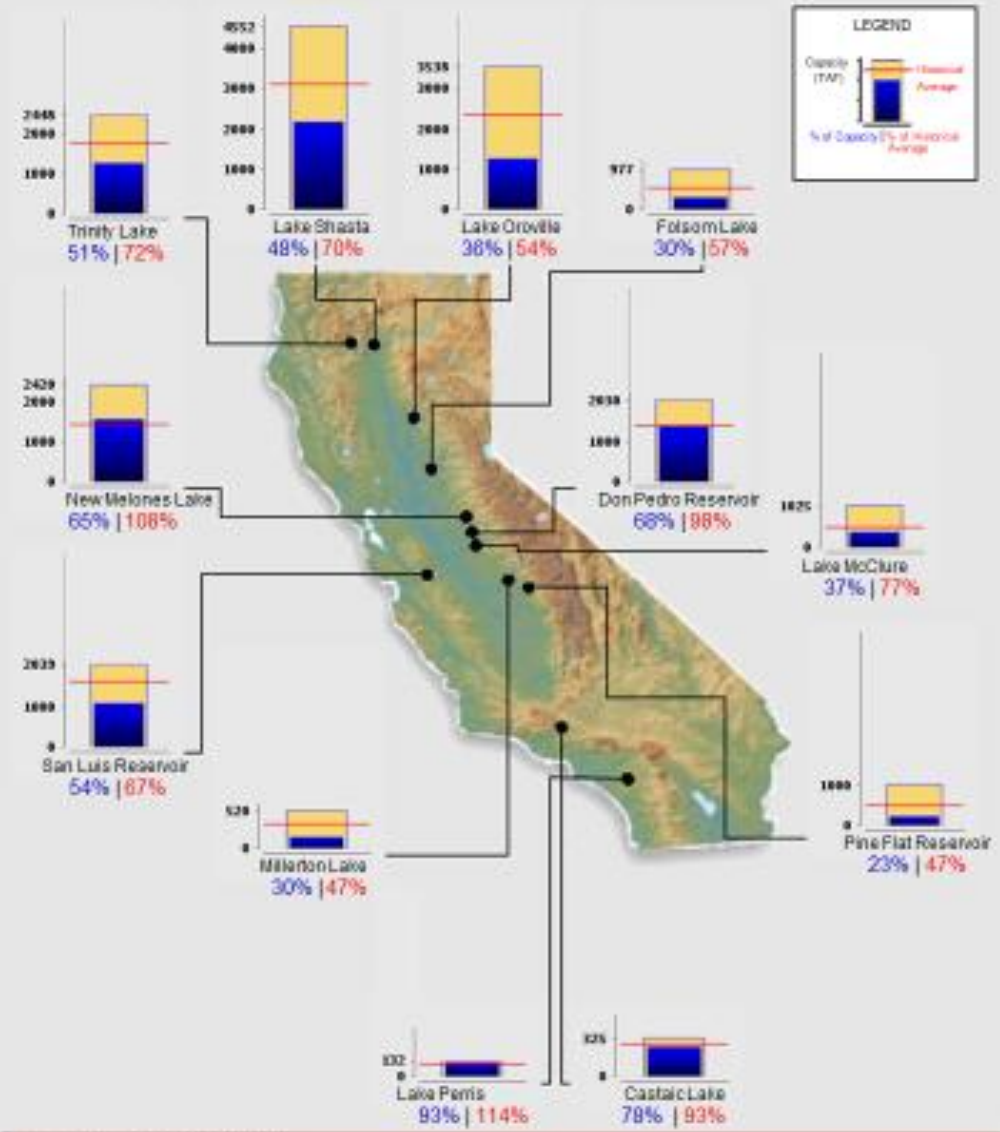




Reservoir Conditions

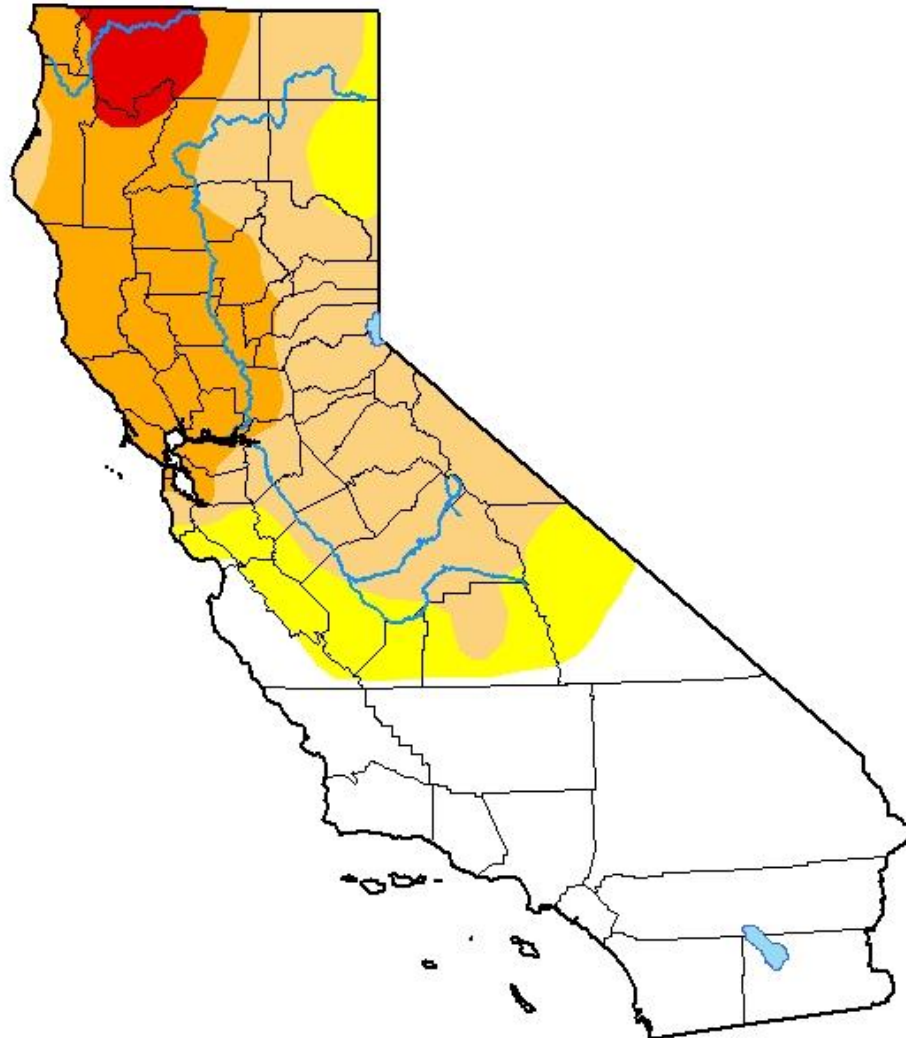
Ending At Midnight - February 7, 2021

CURRENT RESERVOIR CONDITIONS



U.S. Drought Monitor California

May 12, 2020
(Released Thursday, May. 14, 2020)
Valid 8 a.m. EDT



Intensity:



The Drought Monitor focuses on broad-scale conditions. Local conditions may vary. For more information on the Drought Monitor, go to <https://droughtmonitor.unl.edu/About.aspx>

Author:

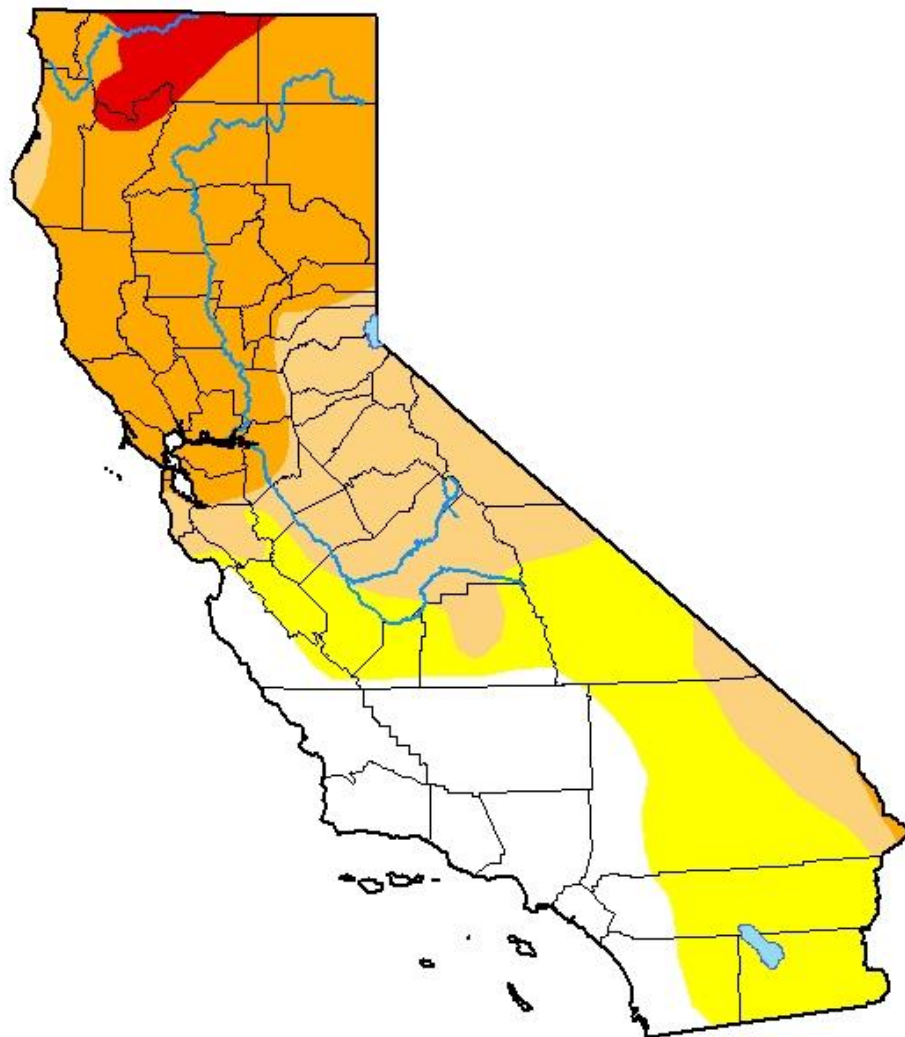
Richard Tinker
CPC/NOAA/NWS/NCEP








droughtmonitor.unl.edu

U.S. Drought Monitor California

September 8, 2020
(Released Thursday, Sep. 10, 2020)
Valid 8 a.m. EDT



Intensity:

-  None
-  D0 Abnormally Dry
-  D1 Moderate Drought
-  D2 Severe Drought
-  D3 Extreme Drought
-  D4 Exceptional Drought

The Drought Monitor focuses on broad-scale conditions. Local conditions may vary. For more information on the Drought Monitor, go to <https://droughtmonitor.unl.edu/About.aspx>

Author:

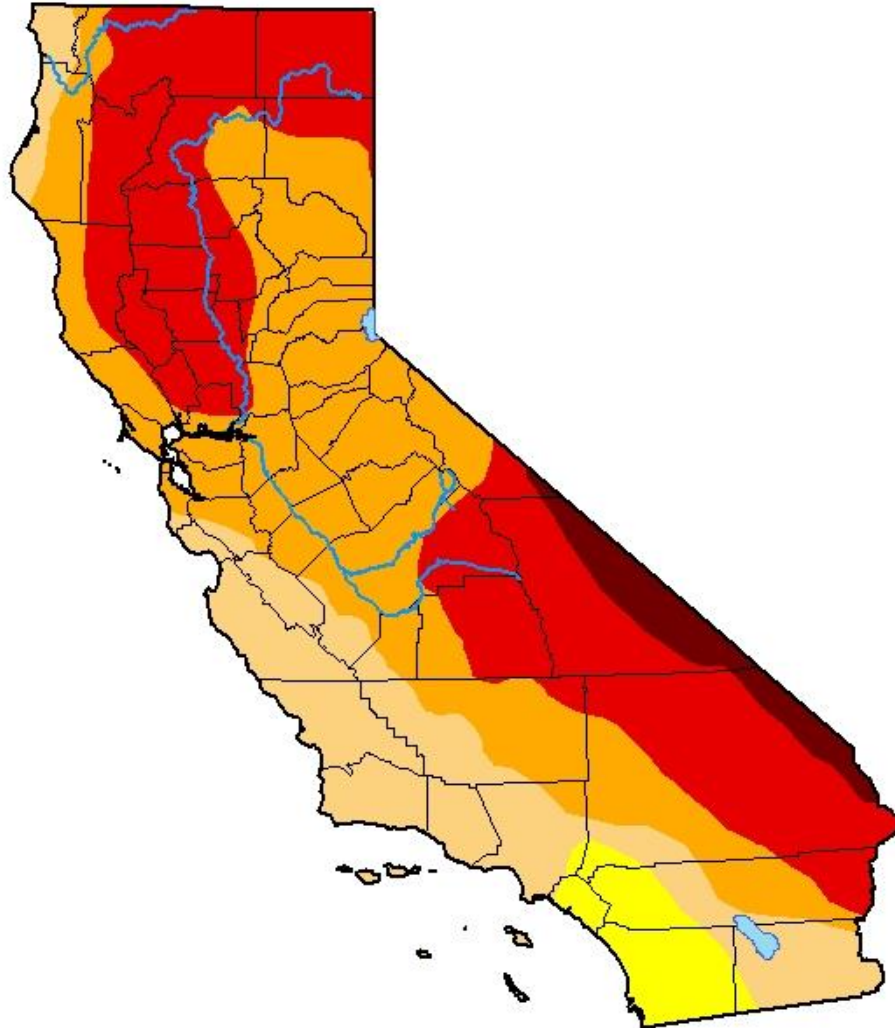
Richard Tinker
CPC/NOAA/NWS/NCEP






droughtmonitor.unl.edu

U.S. Drought Monitor California

January 26, 2021
(Released Thursday, Jan. 28, 2021)
Valid 7 a.m. EST



Intensity:

-  None
-  D0 Abnormally Dry
-  D1 Moderate Drought
-  D2 Severe Drought
-  D3 Extreme Drought
-  D4 Exceptional Drought

The Drought Monitor focuses on broad-scale conditions. Local conditions may vary. For more information on the Drought Monitor, go to <https://droughtmonitor.unl.edu/About.aspx>

Author:

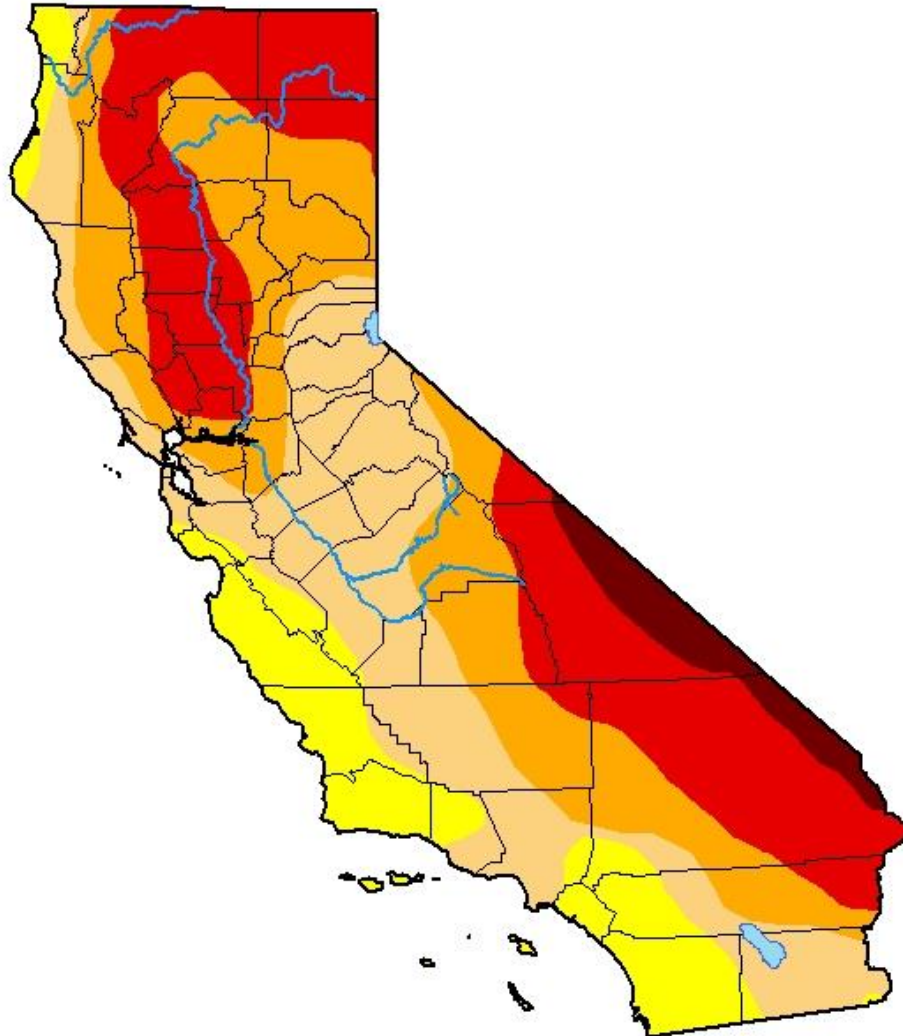
Richard Tinker
CPC/NOAA/NWS/NCEP



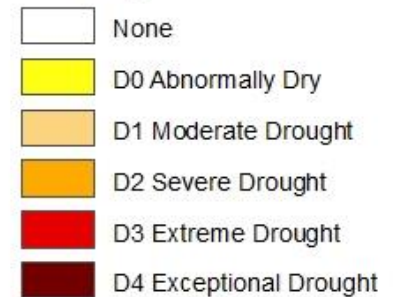
droughtmonitor.unl.edu

U.S. Drought Monitor California

February 2, 2021
(Released Thursday, Feb. 4, 2021)
Valid 7 a.m. EST



Intensity:



The Drought Monitor focuses on broad-scale conditions. Local conditions may vary. For more information on the Drought Monitor, go to <https://droughtmonitor.unl.edu/About.aspx>

Author:

Brad Rippey
U.S. Department of Agriculture



droughtmonitor.unl.edu

Wetter, Cooler Pattern Next Weekend

Next Weekend, February 12-14, 2021

Forecast Highlights

- Valley Rain Showers
- Mountain Snow
- Below Normal Temperatures
- Stay tuned for the details!

Storm Track

Storm Track

Brutally Cold

Below Normal



Issued: February 8, 2021



Valley Rain by the End of the Week

Thursday - Friday

Valley Impacts



Longer than normal commute



Slick roads

Snow Levels

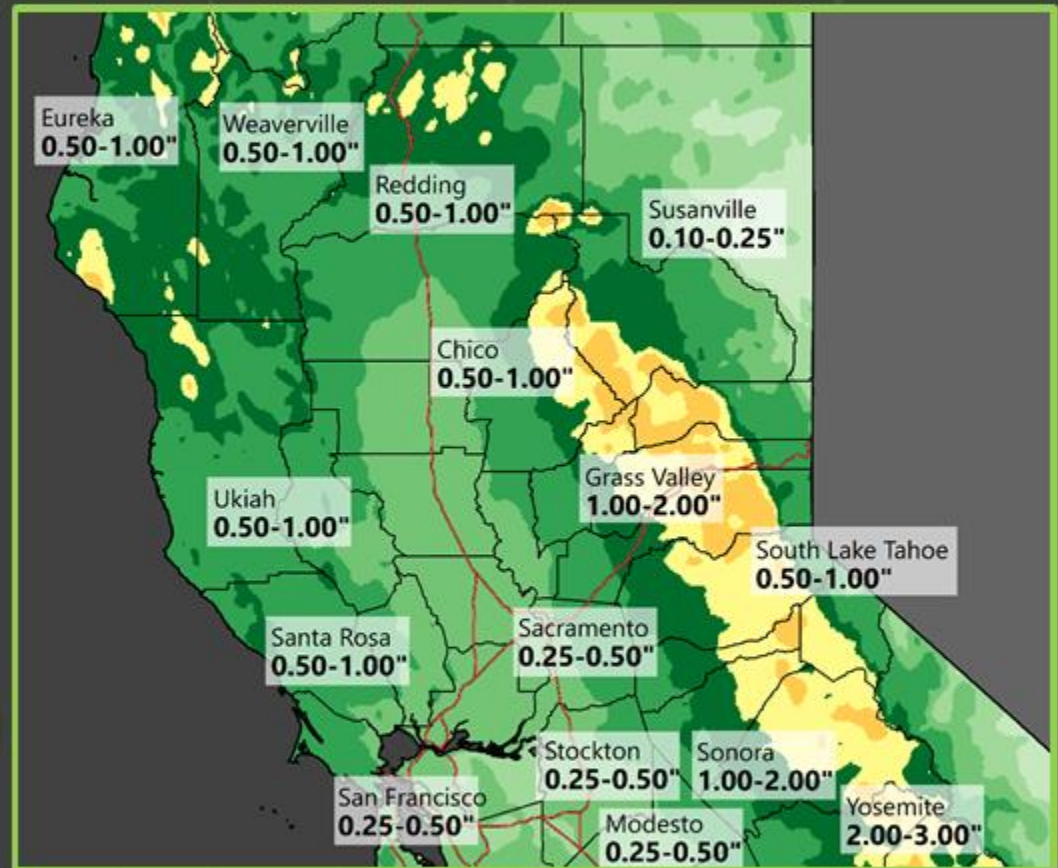


5000 to 6000 feet

Timing



Thursday - Friday. Moderate to heavy at times Thursday night through Friday morning.





Mountain Snow by the End of the Week

Thursday - Friday

Impacts



Chain controls



Travel delays and slick roads



Reduced visibility at times

Snow Levels

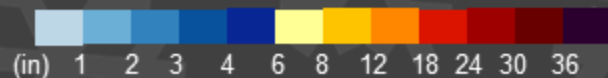
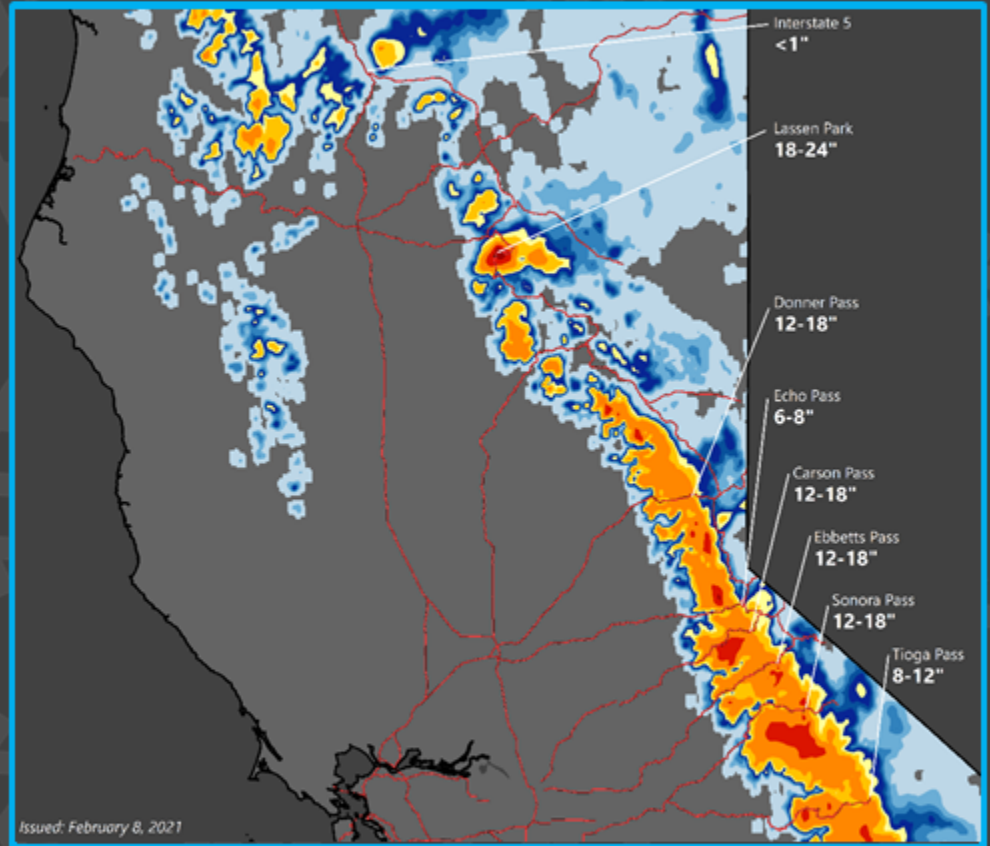


5000 to 6000 feet

Timing



Thursday - Friday. Moderate to heavy at times Thursday night through Friday morning.



NWS Sacramento
Issued: February 8, 2021

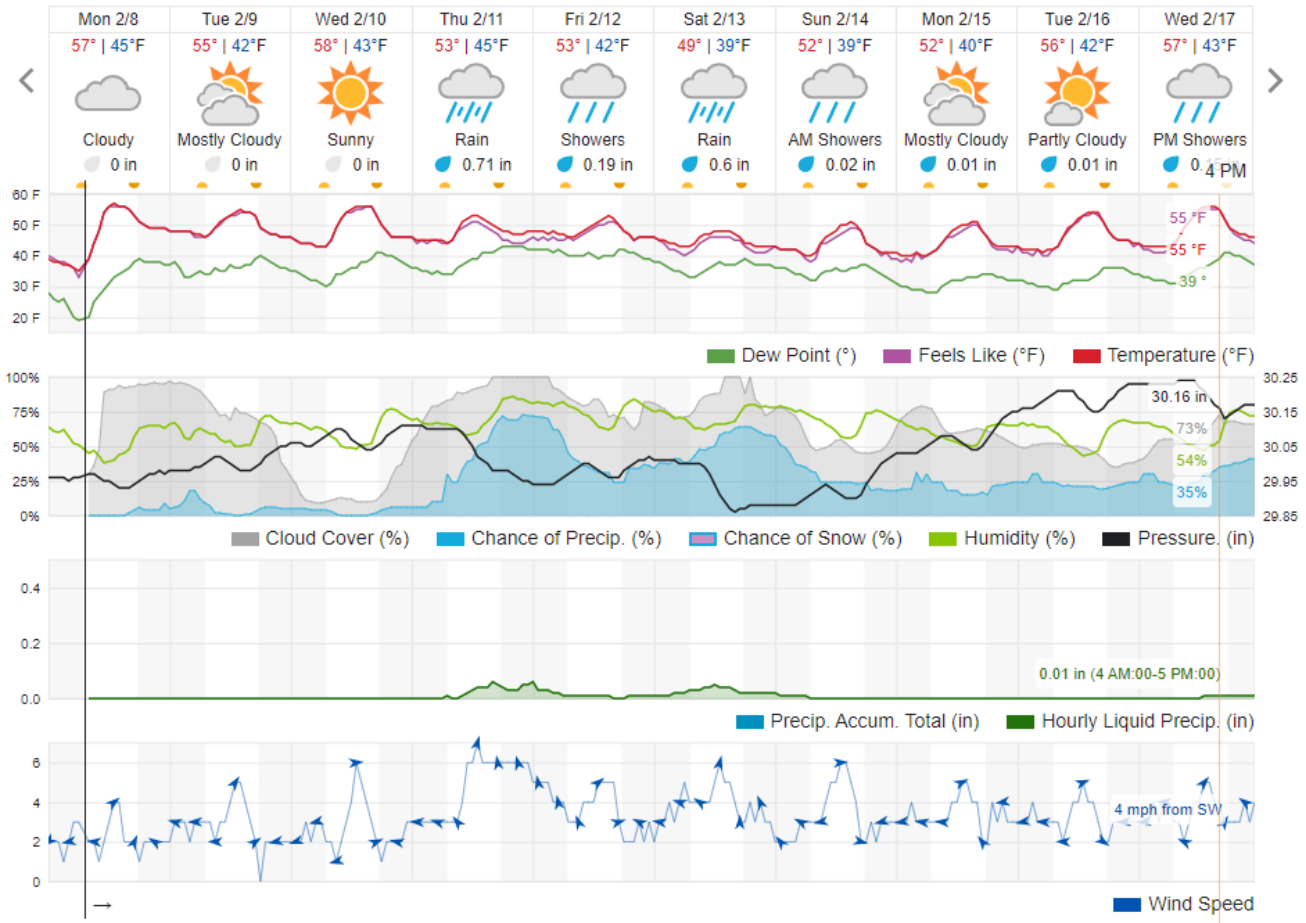


Grass Valley, CA 10-Day Weather Forecast

☀️ 35° HIGH STREET STATION | CHANGE

TODAY HOURLY **10-DAY** CALENDAR HISTORY WUNDERMAP

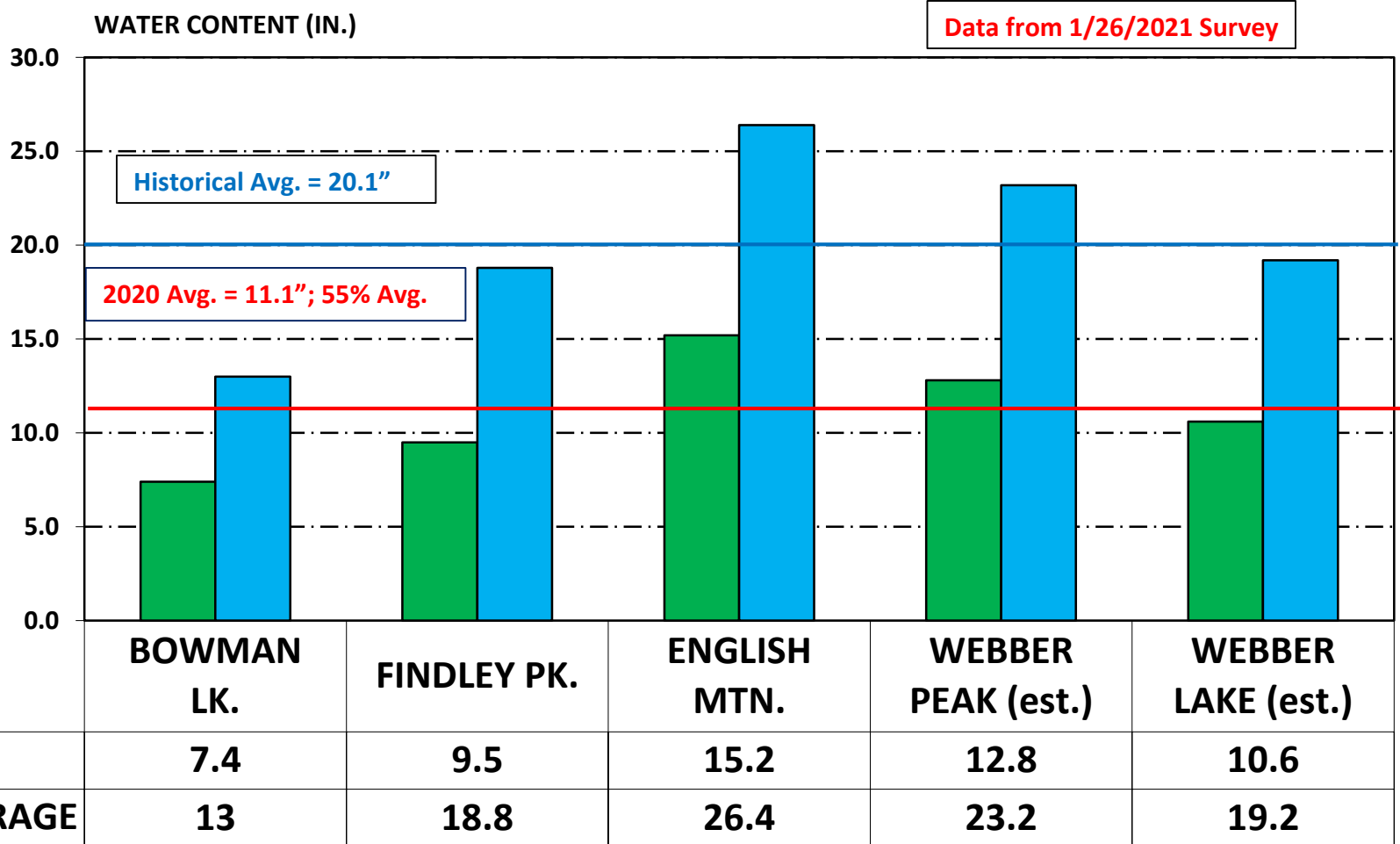
⚙️ Customize



📅 View Calendar Forecast

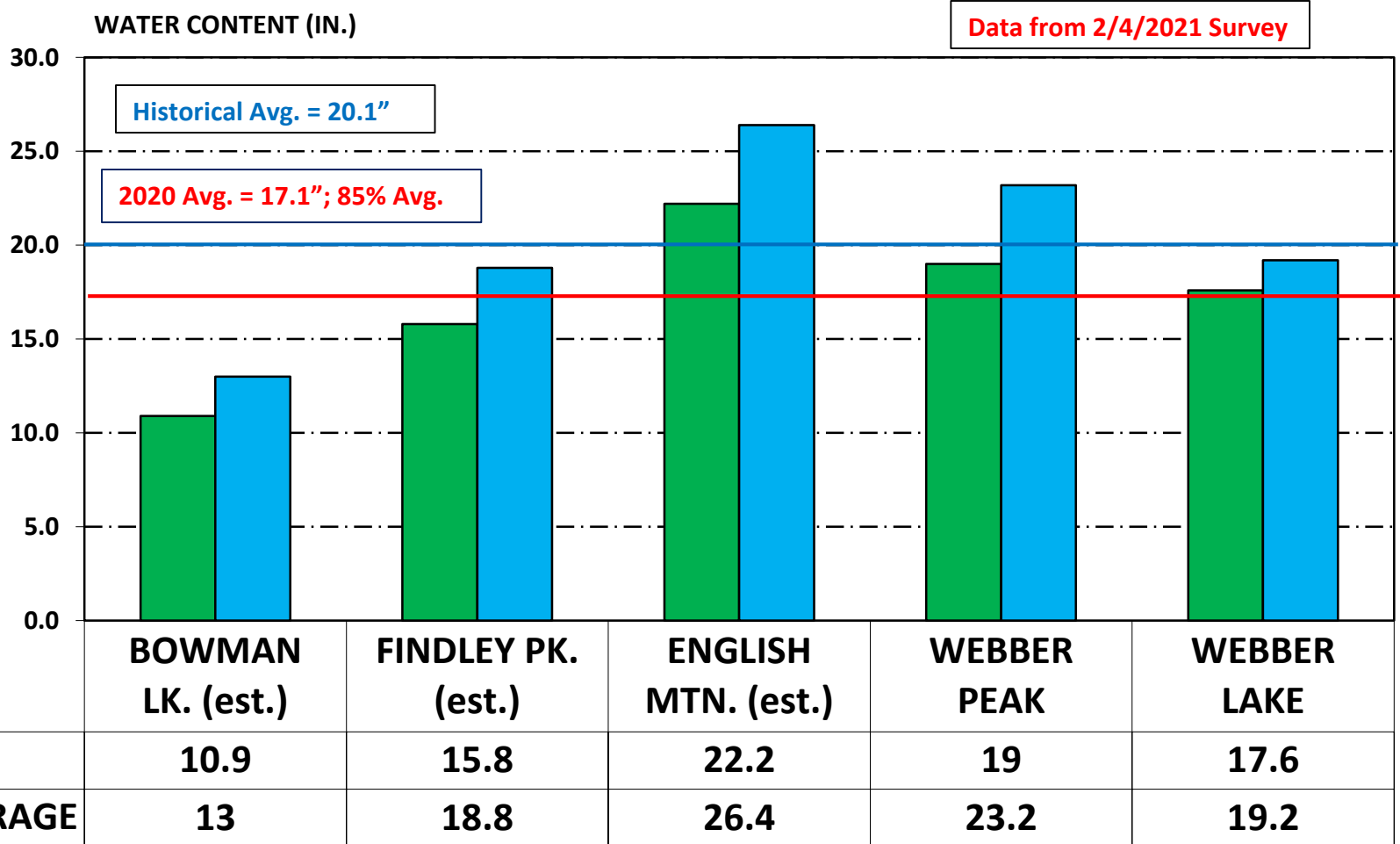
NID SNOW SURVEY

FEBRUARY 1, 2021

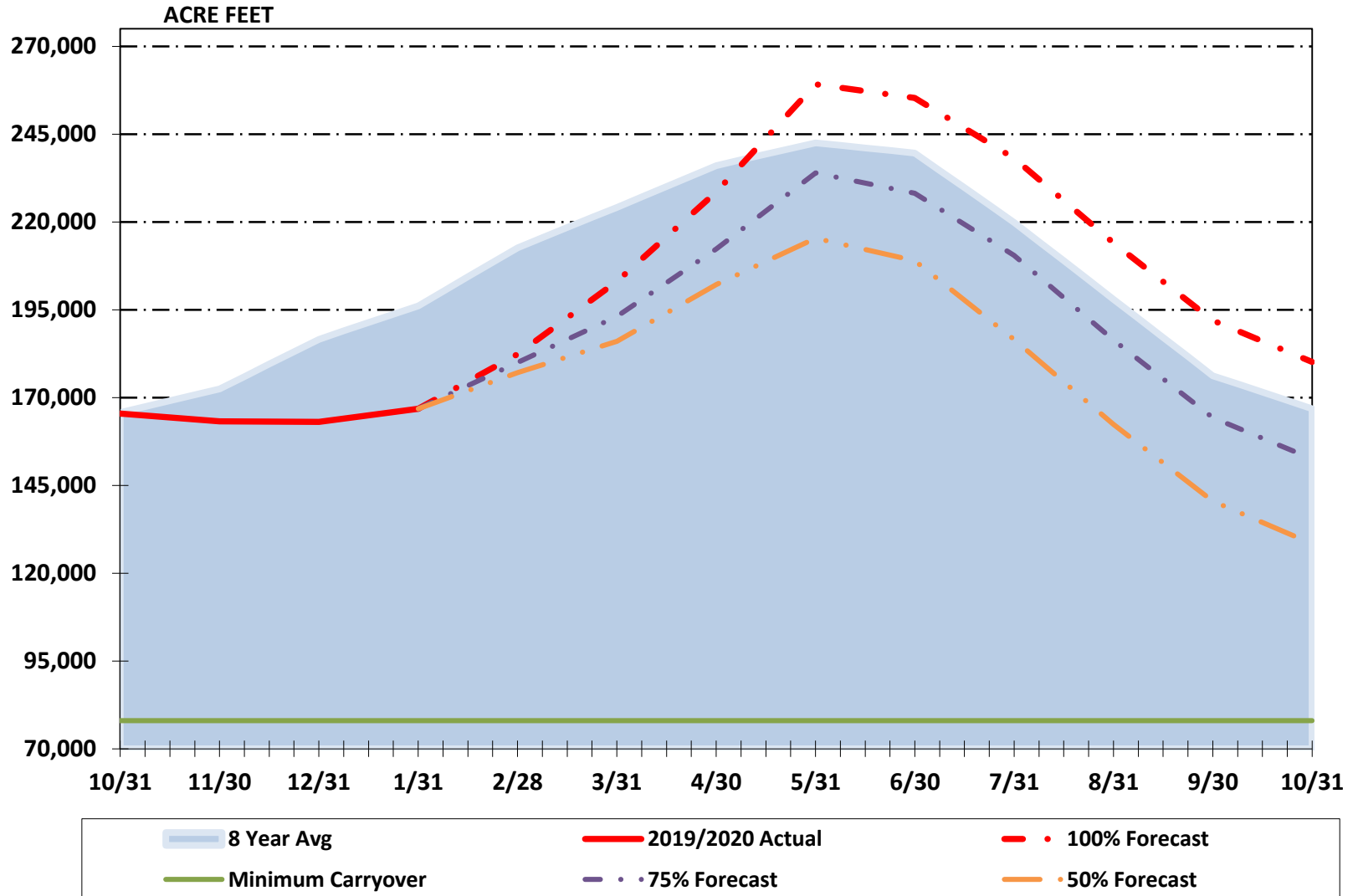


NID SNOW SURVEY

FEBRUARY 1, 2021



2021 STORAGE FORECAST



Prepping for Dry Year Operations

- NID Operations

- Normal water year requires 235,700 ac/ft available
 - Currently @ 172,758
 - Snow surveys show 85% of average
 - More winter to come
 - Projections: @ 100% provide 259,200 (normal year operations)
 - Projections @ 75% provide 234,000 (stage 1 drought)
 - Projections @ 50% provide 215,400 (stage 1 drought)
 - Potential dry year actions
 - Shoulder season operations will not occur this year
 - Water change / order forms have been delayed
 - Surplus water declaration on hold

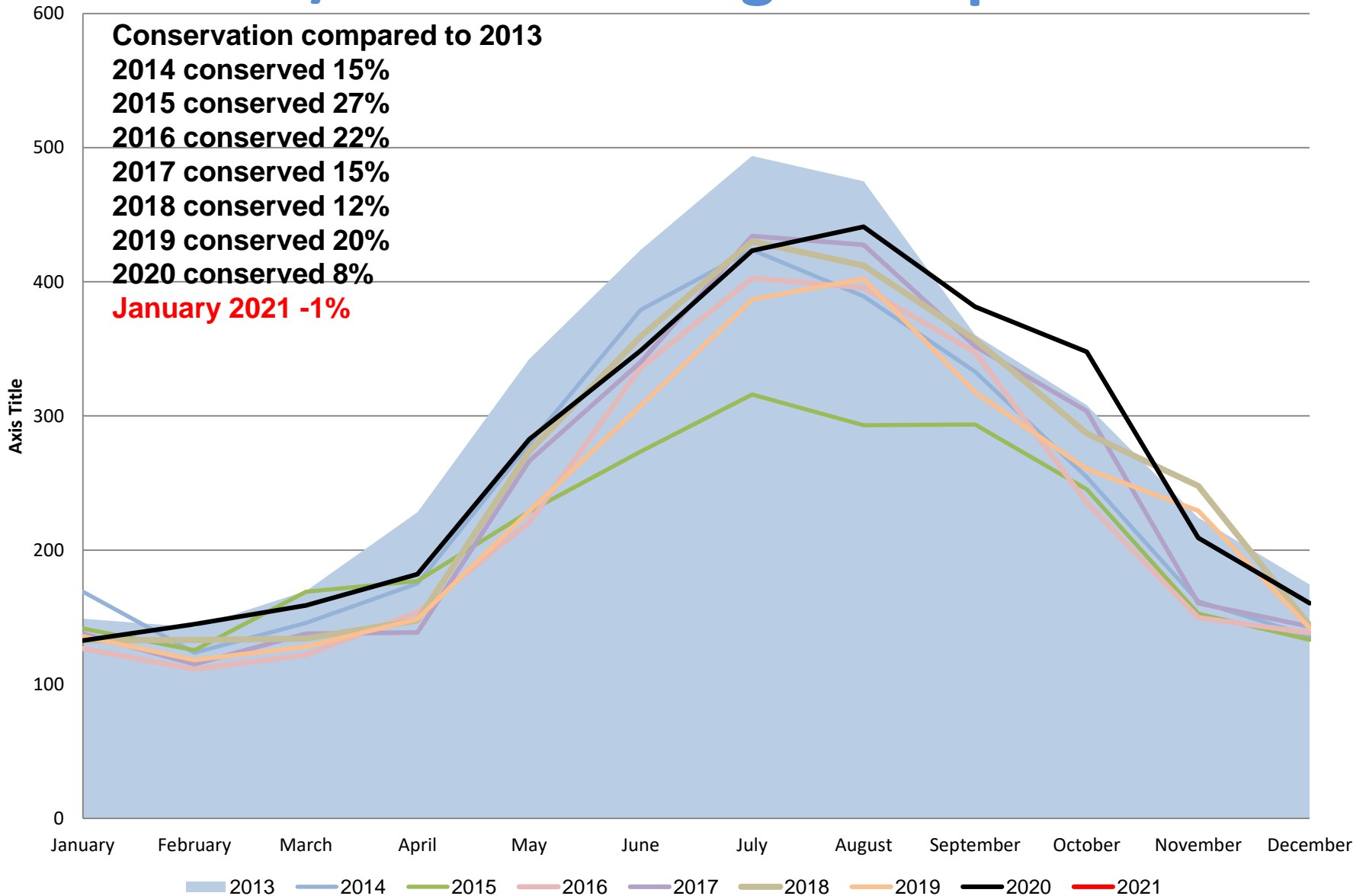
- Potential State Mandated Drought Actions

- State may require drought contingency plan activation
- State may curtail water rights

Water Availability Guidance

	Forecasted Available Supply April 1st	Demand Reduction Targets	Operational Changes	Rate Changes
Normal Operations	> 235,700	Encourage Conservation	Normal Operation	Standard Rates
Stage 1	235,700 to 205,700	10 – 20% Voluntary Usage Reduction	<ul style="list-style-type: none"> Leak repair receives higher priority Increase public outreach and drought awareness Target 75% of end of month October storage for carryover. 	Standard Rates
Stage 2	205,700 to 198,200	10 – 25% Mandatory Usage Reduction	<ul style="list-style-type: none"> Communicate mandatory reduction targets to retail customers Purchase of available Contract water to achieve a target carryover of 90,000 acre feet Distribution system flushing only for public health & safety Organize Drought Hardship Committee 	<ul style="list-style-type: none"> Implement Contract water purchase rates to reimburse the District for the costs associated with purchase of water above the 7,500 acre feet for normal operational needs. Charges to be reimbursed through the appropriate funding mechanisms. Water purchased will be utilized to meet carryover target.
Stage 3	198,200 to 175,700	25 - 40% Mandatory Usage Reduction	<ul style="list-style-type: none"> Purchase of available Contract water to achieve a target carryover of 80,000 acre feet 	<ul style="list-style-type: none"> Implement Contract water purchase rates Implement Conservation Rates as established in the Districts Rate Schedule
Stage 4	<175,700	> 40% Mandatory - Reductions - based on available allotment and target carryover.	<ul style="list-style-type: none"> Purchase full allotment of Contract water to achieve target carryover of 78,000 acre feet 	<ul style="list-style-type: none"> Implement Contract water purchase rates Implement Conservation Rates as established in the Districts Rate Schedule

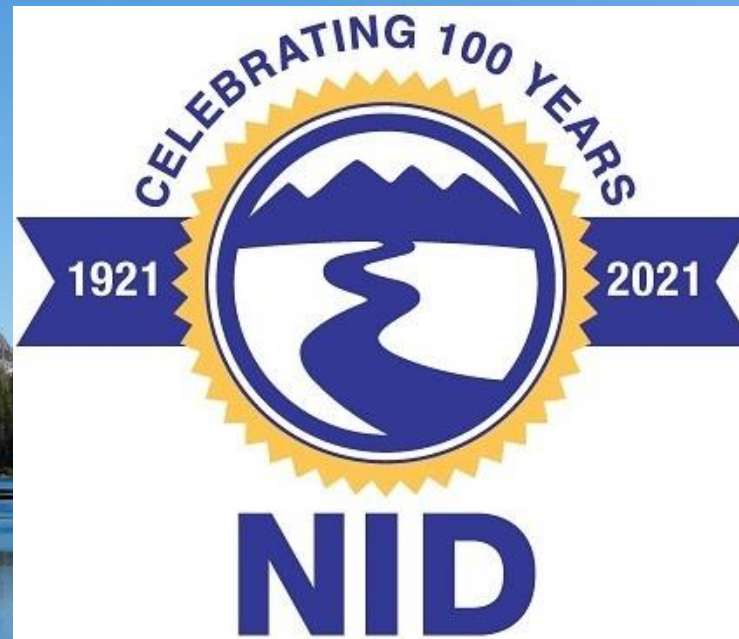
NID T/W Water Usage Comparison



WHO Committee

Water Operations Activities & KPI

February 9, 2021



Proudly serving portions of Nevada, Placer, and Yuba Counties

Operations Activities Report

• Distribution

- SYC out snow & wind
 - PG&E still shoveling
 - Backup pumps on
- Spillway checks complete
- System wide flushing almost complete
- Backflow inspections complete
 - 1813 inspected
 - 220 repaired

• Water Treatment

- Treated water production:
 - January 147.2 MG
- Sampling
 - Crypto Combie Ophir
- Annual water system state report
- CCR, WSS, & UWMP
- NID Water quality lab closing
 - Regulation changes make it no longer financially feasible
- Coordinating with Maint. for tank cleaning







01/20/2021 11:51

Operations Activities Report

● Water Resources

- Water Rights
 - Received credit on petition fees
 - Working on usage reports
- AG & Urban water plans
- Continued snow surveys

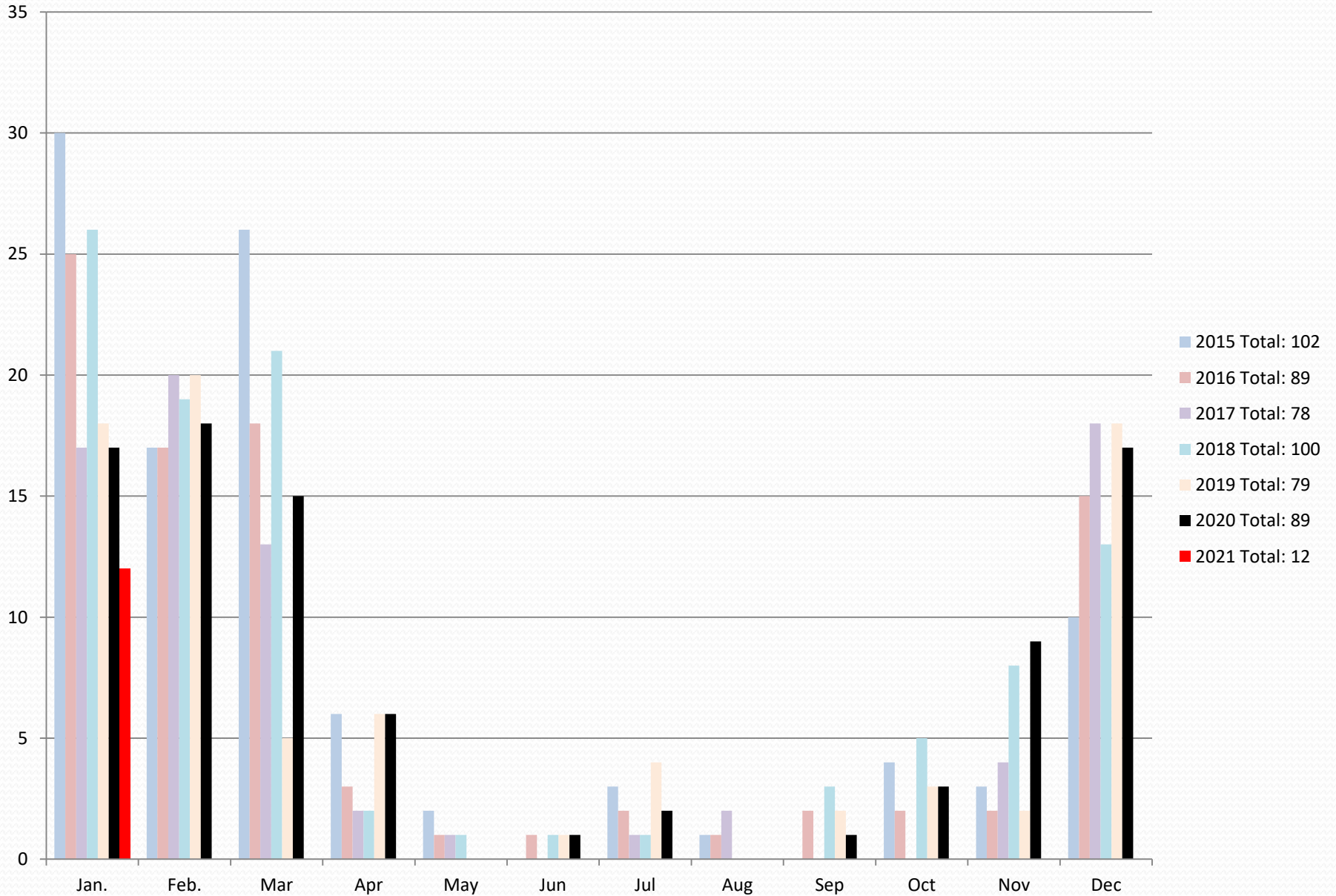
● Customer Service

- Online bill payment
 - 28,000 transactions
 - 3.7 million dollars
 - 2,665 paperless customers
- LIRA – 52 utilized in Jan.
- Updating fee schedules
- Waiting on Ag mailing

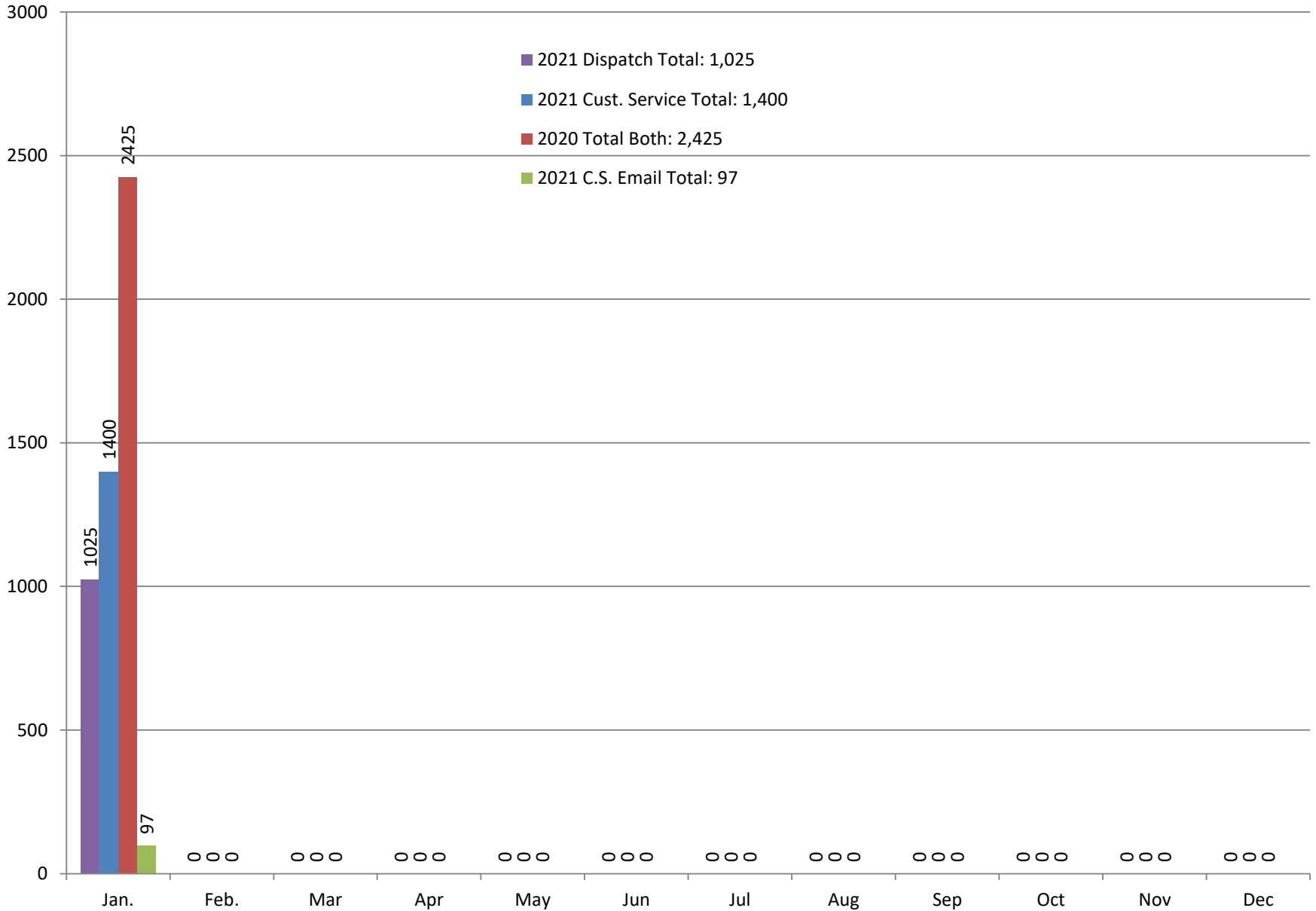
● Electrical

- Mag 3 pumps
- Firmware updates PLC
- Radio tower updates
- Integrated Jayhawk PLC
- HMI interface Jayhawk
- Smartsville meter
- LWW silo demo
- Wiring at Scotts Flat
- Rattlesnake PRV telemetry

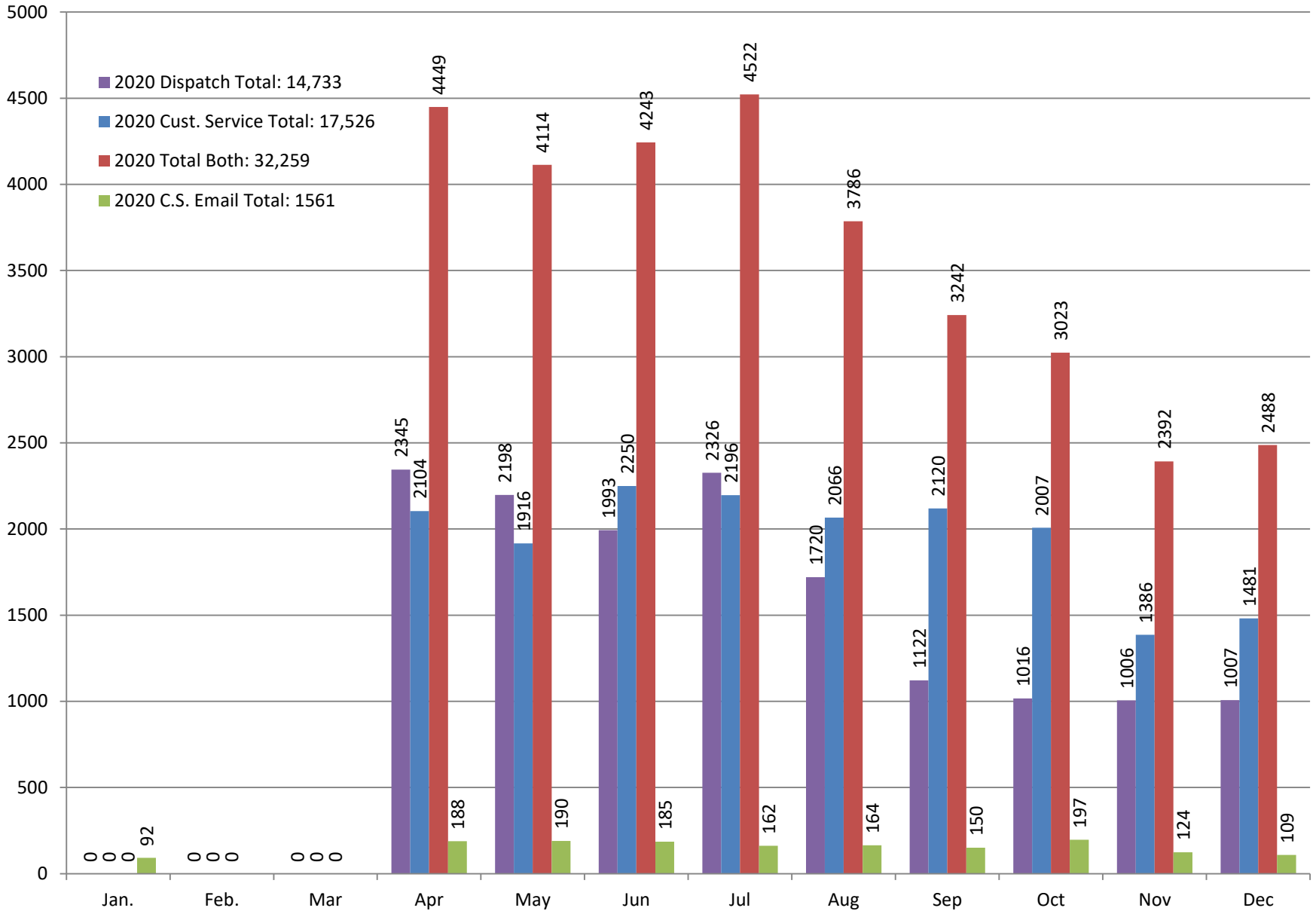
Scheduled Raw Water Outages



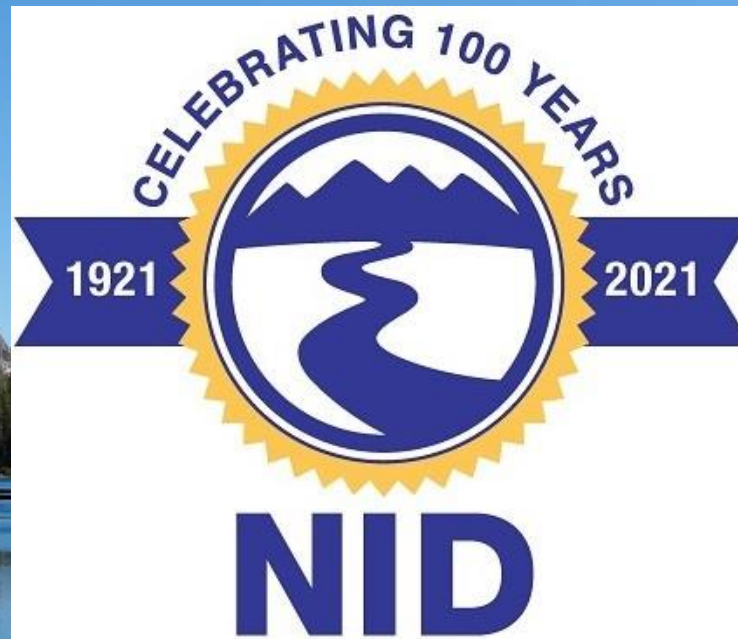
Customer Communications 2021



Customer Communications 2020



Questions???



Proudly serving portions of Nevada, Placer, and Yuba Counties